

Preparation of papers for *Przegląd Elektrotechniczny*

Abstract. These instructions give you guidelines for preparing papers for "Przegląd Elektrotechniczny". The authors are requested to prepare the paper according to the recommendations given below. The length of the abstract should be not larger than four lines

Streszczenie. In this place the editor of journal inserts Polish version of the abstract. Please leave three lines for this abstract. Of course Polish language Authors are requested to prepare also Polish "Streszczenie". All papers should have two sets: title, abstract, keywords - Polish and English. (*Przygotowanie artykułu do Przeglądu Elektrotechnicznego* - polski tytuł na końcu streszczenia - Polish title at the end).

x

Keywords: please insert 3 – 4 keyword or phrases.

Słowa kluczowe: in the case of foreign Authors in this line the Editor inserts Polish translation of keywords.

Introduction

To prepare the paper for *Przegląd Elektrotechniczny* it is recommended that you use MS Word editor. The paper should be prepared according to the instructions below. Although it not as a "camera ready" version the changes introduced by Journal Editor should be only "cosmetic". The formatted version of the paper helps in the assessment of the paper length and organization. Please take into account, that this paper will be re-arranged using a different editing package and therefore it is not allowed to apply special automatic tools proposed by MS Word (for example automatic hyphenation, automatic references or figures numbering, templates etc).

Firstly, start with the formatting of the page. The paper should be prepared using A4 paper format with the following margins: upper, left and right margins to be set at 1.8 cm and bottom margin to be set at 2.5 cm. The first line comprises of the authors' names - full name and surname (type size 10 with Arial font). Underneath the author's name, insert the authors' affiliation (type size 8 with Arial font). Insert two blank lines and then add the title of the paper (type size 16 with Arial bold font). Insert a further two lines and write abstracts and key words (type size 7.5 with Arial Italic font). Insert one line and add the section line. There should be two columns with a separation of 5 mm.

Formatting of the text

The typical length of the paper should be limited to no more than 5 pages. The whole paper is written using type size 9 and Arial font with the indentation set at 5 mm. Directly after section headings (type size 9 using Arial bold), place the text in justified style. For figure captions, names of the tables and footnotes use Arial font with type size 8. When symbols need to be inserted into the text, use option "insert/symbol" (for example $\Delta\alpha$ or $\mathfrak{S}\in\infty$). Please do not use the equation editor for this purpose. The equation editor should only be used if a symbol does not exist in the symbol list – for example \hat{H} . Although the whole text is written using Arial font, for symbols please use the Times New Roman italic – for example J and not J (i.e. the same symbols as in the equations).

Equations

For equations it is recommended to use standard equation editor existing in Word editor (usually it is Math Type editor). The equation editor is defined as follows: font Times New Roman italic, matrix bold, for letters font 10, for index 8, for symbol 12. For example, typical equation should be as:

$$(1) \quad J = \sum_0^{\infty} A^2 \sin \omega t + \int_0^{\infty} \sqrt{B_1^2 + C_2^2} + \frac{4\pi}{\mu_0} \int \frac{J \times r}{r^3} dv$$

where: J – current density, r – distance, A, B, C – coefficients.

Insert the equation number on the left side (it seems as strange, but it is old tradition of our journal), between the text and the equation please leave the distance of 6 points. It is not accepted insertion of the equations into tables.

The new versions of Word offer the equation editor not compatible with MathType - thus after conversion to older version the equation is a very bad quality "bitmap". The solution is to use original MathType software.

Figures

Generally, it is sufficient if the figures are inserted in the document (as an example below - Fig. 1), but for security it is better if the original sources of the figures are also provided, using a typical format such as: vsd, cdr, eps, tif or jpg (i.e. electronic version). Please do not insert the figure directly in the text, but use the "insert text-box" option, and then insert the figure inside of the text box. In this way it is easier later to move or change the dimensions of the figures.

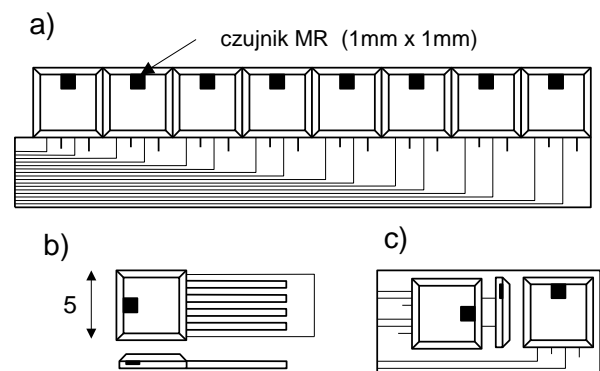


Fig. 1. An example of the figure inserted into the text

It is recommended to indicate the area of future figure by "enter" key and next to insert the text-box. Such method ensure that after change the figure the whole paper is not destroyed.

The best case is, if the figures are of the same width as the column – 8 cm. The letters in the figures should be not smaller than 2 mm. Figure 1 presents an example of a graph.

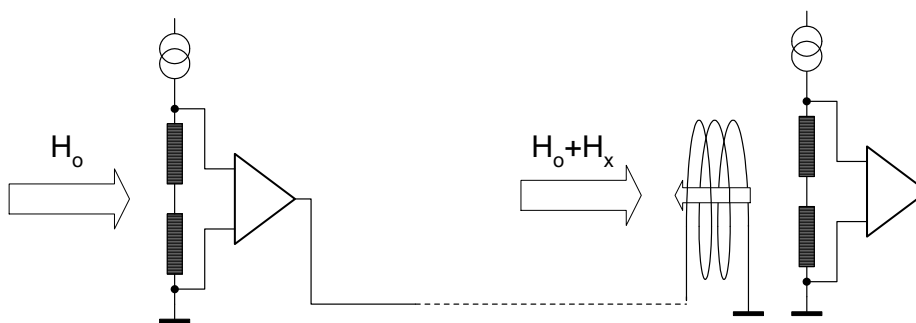


Fig.2. An example of the wide figure inserted into the text

If the figure is as wide as the whole page we can insert two sections lines and between them change the one-column style - as it is presented in Fig. 2.

Please do not insert the figures into the tables (with an exception of special case where we would like to order several sub-figures into one figure).

If there are problems with electronic version of the figures it is recommended to deliver the article with supplemented "hard copies" of the figures. This means that also a "printed version" of the figures should be included for eventual scanning. But of course scanned figure is not as good quality as original one.

It is possible to print figures in the colour version, but Authors should take into account that colour page is much more expensive than black/white and moderation in applying of the colour is advisable.

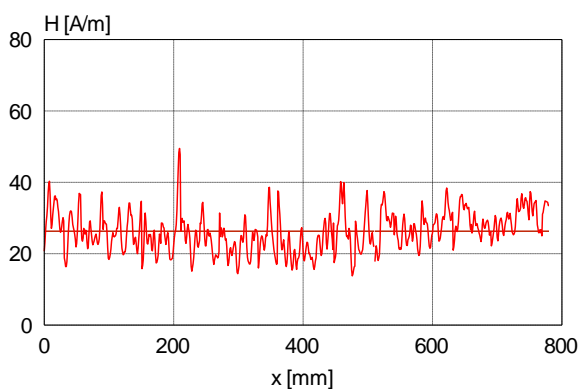


Fig.3. An example of a graph

Tables

Similarly as in the case of the figures the best width of the tables is the width of the column – 8cm. An example of a table is presented below.

Table 1. The parameters of the sensor

Sensor type	Dimensions [mm]	Sensitivity [mv/T]
B50/A	20×20×200	20.2
B80/C	50×20×200	30.5
C20/G	40×30×800	70.4

If the table is wide you can inset it similarly as wide figure (see Fig. 2)

Acknowledgments to be inserted at the end of the article using type size 9 and Arial italic.

References

References are cited in the text by square brackets [1]. Two or more references at the time may be put in one set of the brackets [2, 3]. The references are numbered in the order in which they are cited. The style of the references is as follows:

REFERENCES

- [1] Kowalski J., Jak pisać tekst do Przeglądu, *Przegląd Elektrotechniczny*, 78 (2002), nr 5, 125-128
- [2] Johnson B., Pike G.E., Preparation of Papers for Transactions, *IEEE Trans. Magn.*, 50 (2002), No. 5, 133-137

The references are written using type size 8 with Arial font.

Authors

The address for correspondence, e.g. name with title, address of the institution, should be included at the end of the article. The electronic mail address of all Authors is indispensable for sending a proof and final pdf file.

Authors: *prof. dr hab. inż. Stanisław Malinowski, Politechnika Poznańska, Instytut Elektroenergetyki, ul. Piotrowo 3a, 60-965 Poznań, E-mail: Malinowski@put.poznan.pl; dr inż. Jan Cichocki, Instytut Elektrotechniki, Zakład maszyn Elektrycznych, ul. Pożaryskiego 28, 04-703 Warszawa, E-mail: cichocki@iel.waw.pl.*

Delivering of the paper

It is not necessary to send the printed version of the paper – generally it is sufficient enough to send an electronic version by e-mail. If the files are larger than 20 MB, please copy the paper into our ftp (address on request) or send the paper on CD.

The correspondence address is:

e-mail: tusla@iem.pw.edu.pl