

Hybrid of Lamda and Bee Colony Optimization for Solving Economic Dispatch

Abstract. This paper proposes the method to solve the economic dispatch problem with hybrid of lamda and bee colony optimization (HLBCO). The fundamental constraints of economic dispatch problem are the load demand and power loss into consideration. The generation cost function considering smooth cost function characteristic. To verify the performance of the proposed HLBCO algorithm, it is operated by the simulation on the MATLAB program and tested the two case studies. The simulation results indicate that the HLBCO can provide a better solution than the others in terms of quality solution, computational and convergence efficiently.

Streszczenie. W artykule zaproponowano metode optymalizacji rozsyłu energii prze wykorzystanie hybrydy dwóch metod: lamda i algorytmów rojowych HLBCO. Symulacja przeprowadzona nakilku przykładach dowodzi że zaproponowany algorytm lepiej rozwiązuje problemy ekonomicznego rozsyłu biorąc pod uwagę jakość i skuteczność. **Optymalizacja ekonomii rozsyłu enegii z wykorzystaniem metod rojowych i metody lamda.**

Keywords: lamda, bee colony, optimization, economic dispatch.

Słowa kluczowe: metody rojowe, metoda lamda, optymalizacja rozsyłu enrgii.

Introduction

The electricity is an important for economic and social development. Planning, security and reliability of electrical power are necessary for electrical power generation. Economic dispatch is the method of determinative the most efficient, low cost and reliable operation of a power. The objective function of economic dispatch is to minimize the total fuel cost of electrical power generation which the demand, power loss and constraints are satisfied. There are many methods to solving the economic dispatch problem. The conventional methods for solving economic dispatch problem are lamda iteration method, gradient method, newton's method, piecewise linear cost functions and dynamic programming [1] that owing to tedious calculations and its incapability to solve multi-model and discontinuous problem. The novel methods have replaced it such as simulated annealing (SA) [2]-[3], genetic algorithm (GA) [4]-[5] and tabu search (TS) [6]-[7]. There are probabilistic heuristic algorithms which have been successfully used to solve the economic problem.

Currently, the swarm intelligence is focused on insect behavior in order to develop some mete-heuristics such as particle swarm optimization (PSO) [8]-[11], ant colony optimization (ACO) [12]-[16] and bee colony optimization (BCO) [17]-[21] to solving the economic dispatch problem. These algorithms can provide better solution in comparison to conventional algorithms. All swarm intelligence, bee colony optimization algorithm is very simple and robust stochastic optimization algorithm. The solution quality and computational efficiency of BCO is better than other algorithm, such as SA, GA, TS and PSO [12]. However, the initial population of BCO is obtained randomly, as a result more time to computational efficiency.

In this paper, the hybrid of lamda iteration and BCO to solving the economic dispatch is proposed. The initial population of BCO is modified. The proposed approach aims to minimize the total fuel cost of electrical power generation with satisfying technical constraint of power balance. Results from previous methods are compared in this paper.

This paper is organized as follows. Section II expresses problem formulation of the economic dispatch. Section III proposes the modified BCO algorithm to provide the economic dispatch. Section IV shows the results. And the last section concludes the paper.

Problem formulation

The purpose of the economic dispatch problem is to search the optimal combination of electrical power generation that minimizes the total generation cost while satisfying the constraints.

Objective function

The objective function of economic dispatch problem can be express as a quadratic function:

$$(1) \quad \text{Minimize : } TC = \sum_{i=1}^N F_i(P_i) = a_i + b_i P_i + c_i P_i^2$$

where TC is the total generation cost; N is the number of generating units; $F_i(P_i)$ is the total fuel cost of generation; P is the power output of the i^{th} generator and a_i , b_i and c_i are the cost coefficient of the i^{th} generator.

Constraints

The objective function represented in (1) is subject to the following equality and inequality constraints.

Power balance constraint

The sum of power output of all generator units must be equal to the sum of the total power demand and total power transmission losses.

$$(2) \quad \sum_{i=1}^N (P_i) = P_D + P_{\text{loss}}$$

where P_D and P_{loss} are the total power demand and total power transmission losses respectively. The transmission losses are expressed as a function of the real power and B coefficient matrix.

$$(3) \quad P_{\text{loss}} = \sum_{i=1}^N \sum_{j=1}^N P_i B_{ij} P_j + \sum_{j=1}^N B_{io} P_i + B_{00}$$

where B_{00} , B_{i0} and B_{ij} are the loss coefficient of the transmission line which can be assumed to be constant under the normal operating condition.

Generator rating constraint

The power output of each generator units must be operate within lower and upper operating limit which defined as:

$$(4) \quad P_{i,\text{min}} \leq P_i \leq P_{i,\text{max}}$$

where $P_{i,min}$ and $P_{i,max}$ are the minimum and maximum power output of the i^{th} generator unit.

Hybrid lamda and bee colony optimization

Bee Colony Optimization (BCO) is the one of most recent popular based meta-heuristics optimization technique and it was proposed by Karaboga [25]. The BCO algorithm has an advantage in providing global optimal solutions and it has the capability of solving difficult combinatorial optimization problems.

The collection and processing nectar of bees colony consists of two groups, that are, scout bees and worker bees. The scout bees are responsible for searching for sources of nectar, while the worker bees are responsible for taking a load of the nectar to the honeycomb. The processes of the intelligent behaviors of bees can be summarized as follows: scout bees search the sources of nectar in different directions and return to the honeycomb. After that, the scout bees dance to apprise the quality, quantity, direction and distance of the nectar sources. Then, the colony of bees decides to send worker bees to bring nectar to the honeycomb. This bee behavior is converted to a meta-heuristic search algorithm including the steps of initialization, search, evaluation and update. However, the initial population step is obtained randomly, as a result more time to computational efficiency.

The hybrid of lamda iteration and BCO algorithm to solve economic dispatch is shown in Figure 1 and described as follows:

Step 1: Specify the HLBCO parameter as shown in Table 1.

Step 2: Calculate the value of λ that the power output of the i^{th} generator sum to the total load plus losses using the following:

$$(5) \quad \lambda = \frac{P_D + \sum_{i=1}^N b_i}{\sum_{i=1}^N \frac{1}{c_i}}$$

Step 3: Find boundary of the power output of the i^{th} generator using the following:

$$(6) \quad P_{i,lower} = \frac{\lambda - b_i}{c_i} (1 - rank)$$

and

$$(7) \quad P_{i,upper} = \frac{\lambda - b_i}{c_i} (1 + rank)$$

where $P_{i,lower}$ and $P_{i,upper}$ are the minimum and maximum power output of the i^{th} generator unit; $rank$ is rank power output generation and b_i and c_i are the cost coefficient of the i^{th} generator.

Step 4: Create the initial populations (N) of the power output of the i^{th} generator, while satisfying the constraints can be expresses as follows:

$$(7) \quad P_i = P_{i,lower} + ((P_{i,upper} - P_{i,lower}) \cdot rand(0,1))$$

Step 5: Evaluate the fitness value of the initial population and arrange the fitness in ascending order.

Step 6: Select S best solutions for the neighborhood search and separate the S best solutions into two groups ($E, S-E$).

Step 7: Determine the size of neighborhood for each best solution. Note that neighborhood sizes are equal to NE for solution group E and NO for solution group ($S-E$).

Step 8: Generate solutions around the selected solutions within the neighborhood sizes (NE, NO) and evaluate the fitness value from each patch. Then, select the best solution from each patch.

Step 9: Check the stopping criterion. If no, increase the iteration.

Step 10: Assign the new population ($N-S$) to generate new power output of the i^{th} generator. Then, return to Step 4.

Table 1. The parameters of HLBCO

Parameters	Number
Population size (N)	20
Number of selected sites (S)	14
Number of best sites (E)	10
Number of bees around best sites (NE)	20
Number of bees around other sites (NO)	10

Simulation results

The proposed hybrid of lamda iteration and BCO algorithm is implemented in the MATLAB to solve the economic dispatch. In this study, the two difference test cases are considered for verifying the effectiveness of the proposed approach.

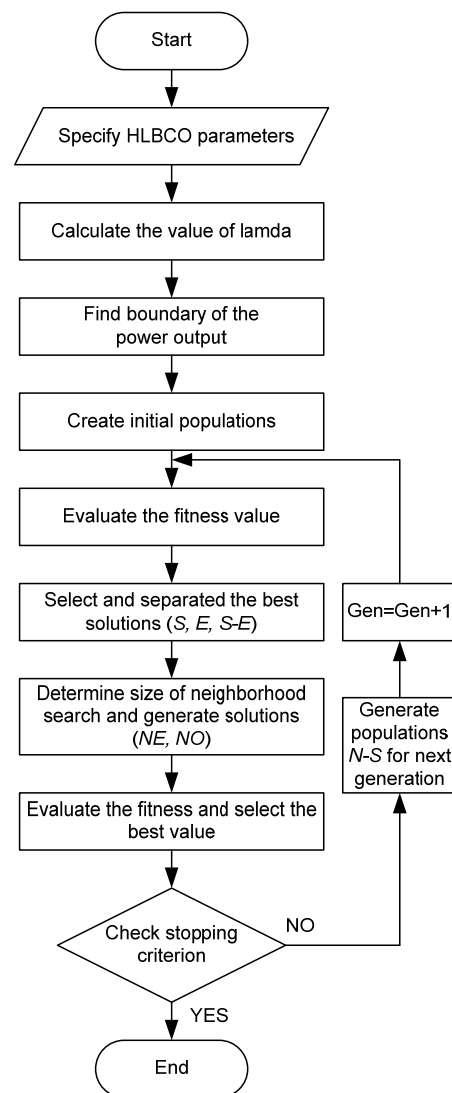


Fig.1. Proposed hybrid of lamda iteration and BCO algorithm.

Test Case 1: Three Units System

This case study is the simple system with three generators and a total load demand of 300 MW. The system data is shown in Table 2. The system loss coefficients matrix as follow [26]:

Table 2. Generator data for case 1

Unit	$P_{i,min}$	$P_{i,max}$	a_i	b_i	c_i
1	50	250	0.00525	8.663	328.13
2	5	150	0.00609	10.04	136.91
3	15	100	0.00592	9.76	59.16

$$B = \begin{bmatrix} 0.0136 & 0.00175 & 0.0184 \\ 0.00175 & 0.0154 & 0.0283 \\ 0.0184 & 0.0283 & 0.161 \end{bmatrix} \times 10^{-2}$$

Table 3. Comparison of difference method for case 1

Units	PSO [26]	SA [26]	DE [26]	HLBCO
P_1	209.001	207.64	207.637	207.644
P_2	85.92	87.2783	87.2833	87.277
P_3	15	15	15	15
P_T	309.9211	309.9205	309.9203	309.92
P_L	9.9833	9.9204	9.9204	9.9205
T_c	3621.75	3619.75	3619.8	3619.75

Test Case 2: Six Units System

In this case, the system consists of six generators with characteristic given in Table 4. The total load demand is 1263 MW and loss coefficients matrix as follow [11]:

Table 4. Generator data for case 2.

Unit	$P_{i,min}$	$P_{i,max}$	a_i	b_i	c_i
1	100	500	0.0070	7.0	240
2	50	200	0.0095	10.0	200
3	80	300	0.0090	8.5	220
4	50	150	0.0090	11.0	200
5	50	200	0.0080	10.5	220
6	50	120	0.0075	12.0	190

$$B = \begin{bmatrix} 0.17 & 0.12 & 0.07 & -0.01 & -0.05 & -0.02 \\ 0.12 & 0.14 & 0.09 & 0.01 & -0.06 & -0.01 \\ 0.07 & 0.09 & 0.31 & 0.00 & -0.10 & -0.06 \\ -0.01 & 0.01 & 0.00 & 0.24 & -0.06 & -0.08 \\ -0.05 & -0.06 & -0.10 & -0.06 & 1.29 & -0.02 \\ -0.02 & -0.01 & -0.06 & -0.08 & -0.02 & 1.50 \end{bmatrix} \times 10^{-2}$$

$$B_0 = [-0.3908 \ -0.1297 \ 0.7047 \ 0.0591 \ 0.2161 \ 0.6635] \times 10^{-2}$$

$$B_{\infty} = 0.056$$

Table 5. Comparison of difference method for case 2.

Units	MPSO[8]	PSO [11]	ABC [17]	HLBCO
P_1	446.71	440.5766	445.8099	449.0285
P_2	173.01	167.4369	172.9227	172.4836
P_3	265.00	278.2356	262.1240	258.0493
P_4	139.00	150.00	142.7788	137.7193
P_5	165.23	157.6061	166.3730	166.5165
P_6	86.78	81.2244	85.4557	91.3657
P_T	1275.7	1275.0796	1275.4641	1275.1630
P_L	12.733	12.0796	12.4641	12.1630
T_c	15447	15445.4866	15444.2616	15439.6303

The performance of the economic problem is investigated with different optimization techniques. Both the quality solution, computational and convergence efficiently. In the simulation results from the proposed HLBCO, ABC, PSO and MPSO algorithms are compared in table 3 and 5. The results

indicate that HLBCO can provide a better solution than the other approaches in total generation cost and convergence efficiently.

Convergence Characteristic

The selected convergence solutions are shown in Figures 2-3. The solutions converge within 2 iterations. The results show the effectiveness and performance of the MBCO better solution than the others in terms of function cost value, computational and convergence time as shown in Figure 2-3.

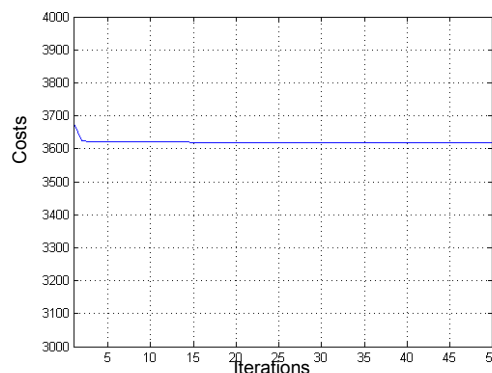


Fig.2. Solution convergence of MBCO in case 1.

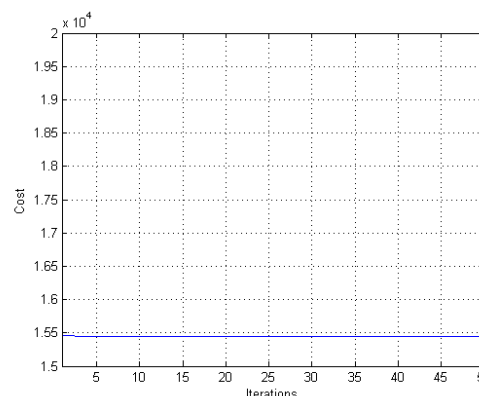


Fig.3. Solution convergence of MBCO in case 2.

Conclusion

This paper proposes a methodology for solving the economic dispatch using hybrid of lamda iteration and bee colony optimization with taking various generator constraints. Two case systems are tested evaluates the performance proposed approach. The HLBCO shown that algorithm is robust and can provide an optimal solution with fast computation and small number of iterations. The studied results confirm the HLBCO proposed approach are indeed capable of obtaining higher quality solution, computation time and convergence characteristic in comparison with other method.

Acknowledgments

This research is supported by RMUTL hands-on research project, Rajamangala University of Technology Lanna.

Authors: The authors are with the Department of Electrical Engineering, Faculty of Engineering, Rajamangala University of Technology Lanna, Lampang, Thailand
 E-mail: wanchai_kh@rmutl.ac.th; Asst.Prof.Dr. Wanchai Khamsen
 E-mail: chiraphon@rmutl.ac.th; Mr. Chiraphon Takeang
 The correspondence address is:
 E-mail: wanchai_kh@rmutl.ac.th

REFERENCES

- [1] A. J. Wood, B. F. Wollenberg, "Power Generation, Operation, and Control," 2nd edition, Wiley, New York, 1996.
- [2] K. P. Wong and C. C. Fung, "Simulated annealing based economic dispatch algorithm," IEE Proceeding., vol. 140, No.6 Nov. 1993 .pp. 50951-5.
- [3] K. K. Vishwakarma, H. M. Dubey, M. Pandit and B.K. Panigrahi, "Simulated annealing approach for solving economic load dispatch problems with valve point loading effects," International Journal of Engineering, Science and Technology, Vol. 4, No. 4, 2012, pp. 60-72.
- [4] J. C. Lee, W. M. Lin, G. C. Liao and T. P. Tsao, "Quantum genetic algorithm for dynamic economic dispatch with valve-point effects and including wind power system," Electrical Power and Energy Systems 33 (2011), pp. 189–197.
- [5] N. Javidtash, A. Davodi, M. Hakimzadeh and A. Roozb, "Genetic Algorithm for Solving Non-Convex Economic Dispatch Problem," International Journal of Mathematical, Computational, Statistical, Natural and Physical Engineering Vol:8, No:5, 2014, pp.866-869.
- [6] W. M. Lin, F. S. Cheng, and M. T. Tsay, "An improved tabu search for economic dispatch with multiple minima," IEEE Trans. Power System, vol. 17, Feb. 2002. pp. 112-108.
- [7] S. Pothiya, I. Ngamroo and W. Kongprawechon, "Application of multiple tabu search algorithm to solve dynamic economic dispatch considering generator constraints," Energy Conversion and Management 49, 2008. pp.506–516.
- [8] C. C. Kuo, "A Novel Coding Scheme for Practical Economic Dispatch by Modified Particle Swarm Approach," IEEE TRANSACTIONS ON POWER SYSTEMS, VOL. 23, NO. 4, NOVEMBER 2008, pp. 1825-1835.
- [9] A. Jaini, I. Musirin, N. Aminudin, M. M. Othman and T. K. A Rahman, "Particle Swarm Optimization (PSO) Technique in Economic Power Dispatch Problems," in Proceeding of PEOCO2010, 23-24 June 2010, pp. 308-312.
- [10] J. Sharma and A. Mahor, " Particle Swarm Optimization Approach For Economic Load Dispatch: A Review," International Journal of Engineering Research and Applications, Vol. 3, Issue 1, January-February 2013, pp.013-022.
- [11] R. Rahmani, M. F. Othman, R. A. Yusof and M. Khalid, "Solving Economic Dispatch Problem Using Particle Swarm Optimization by an Evolutionary Technique for Initializing Particles," Journal of Theoretical and Applied Information Technology, Vol, 46, No.2, pp. 526-536.
- [12] R Gopalakrishnan and A. Krishnan, "An efficient technique to solve combined economic and emission dispatch problem using modified Ant colony optimization," Sadhana, Vol. 38, Issue 4, August 2013, pp. 545–556.
- [13] P. J. Vasovala, C. Y. Jani, Ghanchi. H. Ghanchi and P. H. K. Bhavsar, "Application of Ant colony Optimization technique in Economic Load Dispatch Problem for IEEE-14 Bus System," International Journal for Scientific Research & Development| Vol. 2, Issue 02, 2014, pp. 990-994.
- [14] F. Khodja, M. Younes, M. laouer, R. L. Kherfane and N. Kherfane, "A New Approach ACO for Solving the Compromise Economic and Emission with the Wind Energy," Energy Procedia 50 (2014), 2014, pp.893-906.
- [15] R. Effatnejad, H. Aliyari, H. Tadayyoni and A. Abdollahshirazi, "Noval Optimization Based on the Ant Colony for Economic Dispatch," International Journal on Technical and Physical Problems of Engineering, Vol. 5, Issue 15, pp. 75-80.
- [16] N. A. Rahmat and I. Musirin, " Differential Evolution Immunized Ant Colony Optimization Technique in Solving Economic Load Dispatch Problem," Engineering, Vol.5, No. 1B, 2013 pp. 157-162.
- [17] S. K. Nayak, K.R. Krishnanand, B.K.Panigrahi and P.K.Rout, "Application of Artificial Bee Colony to Economic Load Dispatch Problem with Ramp Rate Limits and Prohibited Operating Zones," in Proceeding of World Congress on Nature & Biologically Inspired Computing, 9-11 Dec. 2009, pp. 1237 – 1242.
- [18] A. Gupta and K. T. Chaturvedi, "Artificial Bee Colony Optimization For Economic Load Dispatch," International Journal of Advance Computer, Electronics, Electrical, Mechanical and Civil Engineering Research & Technology, Vol. - 01, No. -01, August, 2013, pp. 28-32.
- [19] G. R. Ankasala, "Artificial Bee Colony Optimisation for Economic Load Dispatch of a Modern Power system," International Journal of Scientific & Engineering Research, Volume 3, Issue 1, January-2012, pp.1-6.
- [20] C. Koodalsamy and S. P. Simon, " Fuzzi_ed arti_cial bee colony algorithm for nonsmooth and nonconvex multiobjective economic dispatch problem," Turkish Journal of Electrical Engineering & Computer Sciences, Vol. 21, Issue 1, 2013, pp. 1995-2014.
- [21] C. Chokpanyasuwant, S. Anantasate, S. Pothiya, We Pattaraprakom, and P. Bhasaputra, "Honey Bee Colony Optimization to solve Economic Dispatch Problem with Generator Constraints," in Proceeding of ECTI-CON 2009, 6-9 May 2009, pp. 200 – 203.
- [22] M. Younes and M. Maamar, "Improvement of the ACO metaheuristic by using the method Artificial Bees Colony (ABC)," PRZEGLĄD ELEKTROTECHNICZNY (Electrical Review) R. 88 NR 5b/2012, pp. 174-178.
- [23] F. S. Abu-Mouti and M. E. El-Hawary, "Optimal Dynamic Economic Dispatch Including Renewable Energy Source using Artificial Bee Colony Algorithm," in Proceeding of Systems Conference (SysCon), 19-22 March 2012, pp. 1-6.
- [24] Hardiansyah, "Solving Economic Dispatch Problem with Valve-Point Effect using a Modified ABC Algorithm," International Journal of Electrical and Computer Engineering, Vol. 3, No. 3, June 2013, pp. 377-385.
- [25] D. Karaboga, B. Gorkemli, C. Ozturk and N. Karaboga, "A comprehensive survey: artificial bee colony (ABC) algorithm and applications," Artificial Intelligence Review, Volume 42, Issue 1, 2014, pp. 21-57.
- [26] C.Kumar and T.Alwarsamy, "Solution of Economic Dispatch Problem using Differential Evolution Algorithm," International Journal of Soft Computing and Engineering, Volume-1, Issue-6, January 2012, pp. 236-241.